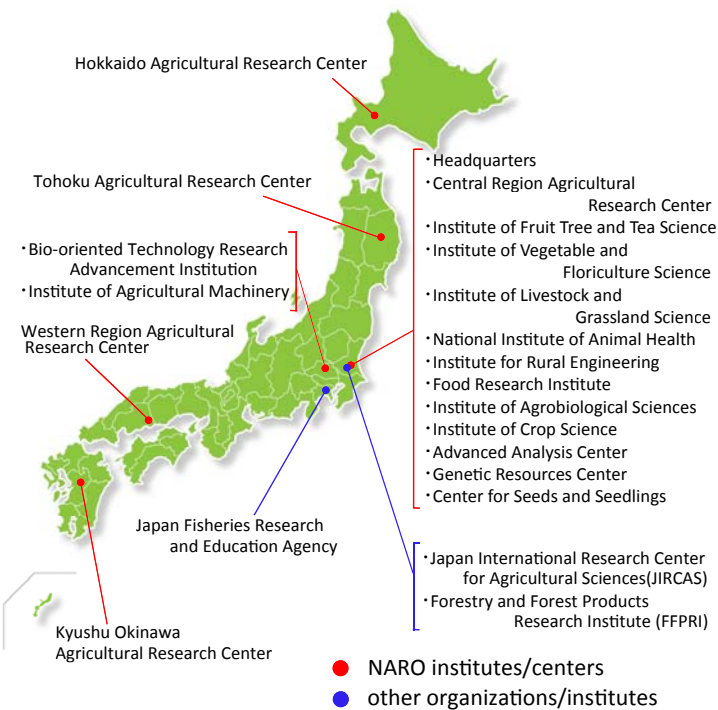


Tsukuba Agriculture Research Hall

The Tsukuba Agriculture Research Hall showcases the research work in agriculture, forestry and fisheries that is carried out by National Research and Development Agency, including the National Agriculture and Food Research Organization (NARO). Exhibition panels illustrate “the importance of food and agriculture” and the latest research on developing Japan’s agriculture, forestry and fisheries. There is also a display of the many tools that have been used during the history of Japanese agriculture.

Management & organizations



Visitors Guide

Open Hours : 9:00am~4:00pm

Days Closed : Year-end and New Year holidays*

*In addition, the Hall may be temporarily closed on other occasions (please check our website for up-to-date information).

Parking : Available*

*Coach parties will need to phone beforehand to book a parking space.

Access

By train and/or bus*

* The nearest bus stop is “Norin Danchi chuo”, which is a 5 minute walk from the Hall.

◎Tsukuba Express, Midorino Station

Take a Kanto Tetsudo “Norin danchi junkan” bus (the bus ride takes about 15 minutes).
Note: These buses do not run on weekends or holidays.

◎Tsukuba Express, Tsukuba Station (Tsukuba Center)

Take a TSUKU-bus “Southern shuttle” bound for “Kukizaki Rojin Fukushi Center” (the bus ride takes about 20 minutes).

◎JR Joban Line, Ushiku Station

Take a Kanto Tetsudo bus bound for “Yatabe Shako,” or “Daigaku Byoin” (the bus ride takes about 20 minutes).



By car

◎About 5 km from Yatabe IC

◎About 4 km from Tsukuba Ushiku IC



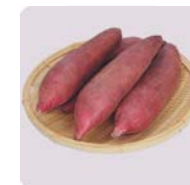
Tsukuba Agriculture Research Hall

3-1-1 Kannondai, Tsukuba, Ibaraki, 305-8517, Japan

TEL:+81-29-838-8980 FAX:+81-29-838-8982

(URL) <http://www.naro.affrc.go.jp/tarh/>

[2016.04]



Learning about the latest research achievements and new agricultural technologies

Research institutes conduct various research projects on agriculture, forestry, fisheries, food and the environment. The Tsukuba Agriculture Research Hall exhibits wall panels and models showing the latest research in agriculture, forestry and fisheries. There is also a special exhibition on the intimate relationship between the soil, insects and agriculture.

① Stable Food Supply System

R&D on raising Japan's self-sufficiency rate, providing a stable supply of safe produce and enhancing production power.




③ Creating Useful Technologies to Stimulate New Industries

R&D on using agricultural biotechnology to utilize particular abilities or characteristics of animals, plants and insects.



⑥ Post-Disaster Reconstruction

Developing new technologies to decontaminate agricultural soil and control the transfer of radioactive materials to agricultural crops in areas that have been affected by a nuclear accident, in order to make it possible to re-open farms and provide safe agricultural produce.




② Agricultural R&D to Produce Added-Value Products

R&D on techniques for food safety, processing and distribution. Research into "WASHOKU" and into breeding healthy, functional varieties and branded agricultural produce.





④ Global-Scale Issues

R&D on responding to global warming in the agricultural field. Agricultural R&D on new technologies in developing countries of tropical and subtropical regions.



⑦ The Big Screen

The large screen provides an introduction to NARO's research achievements; for example, new methods of rice cultivation, unmanned agricultural robots, and so on.

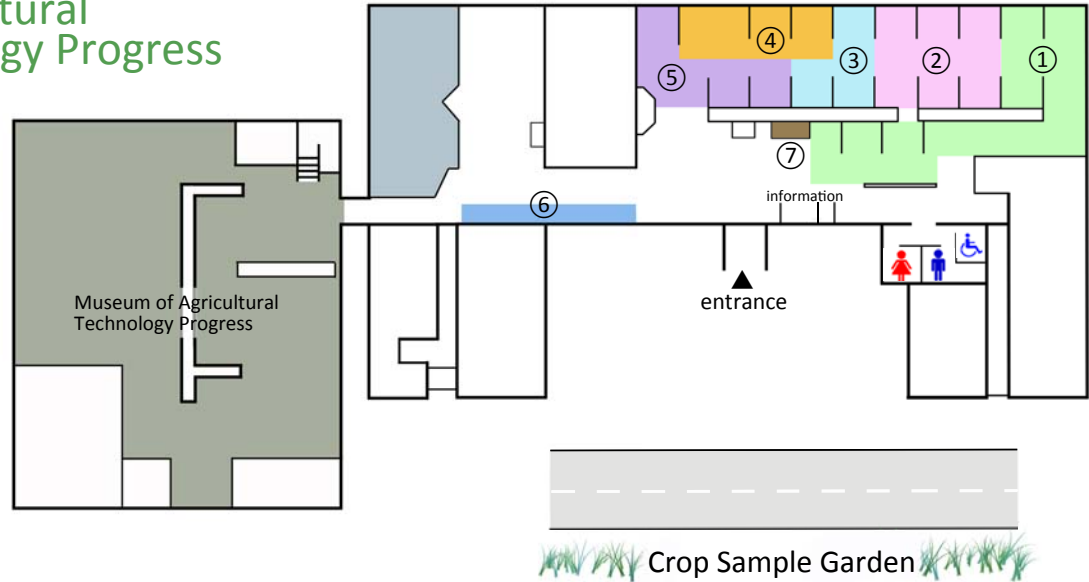


⑤ Various Researches on Agriculture, Forestry and Fisheries

Developing new technologies to maintain agricultural resources and facilities and promote the utilization of biomass.

Museum of Agricultural Technology Progress

The museum houses an exhibition of the many agricultural tools that have underpinned the dramatic development of Japanese agriculture. The tools have actually been used by farmers.



Exhibition room



Crop Sample Garden

About 100 different kinds of unusual crops that have importance worldwide are planted in the garden. The garden is open from summer to autumn.

